

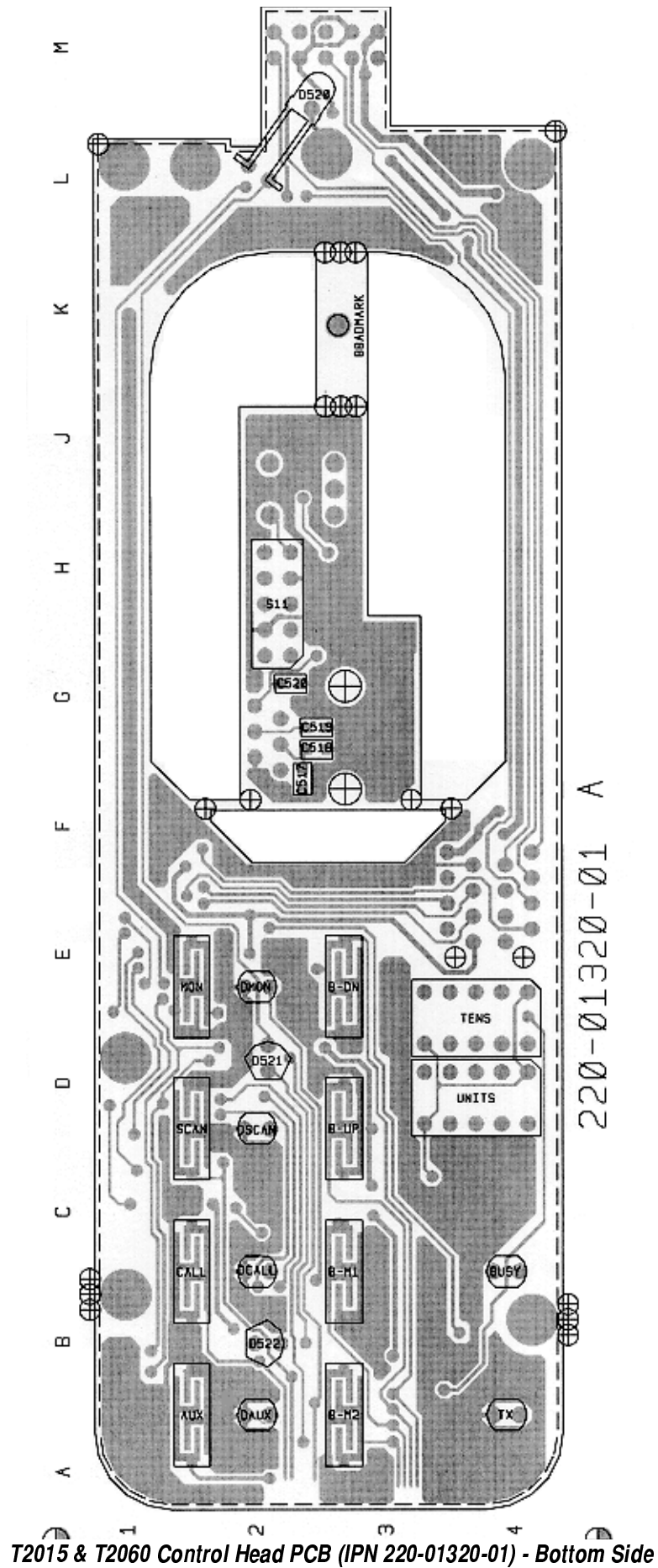
7.13 T2015 & T2060 Control Head PCB

T2015 & T2060 Control Head Parts List (IPN 220-01320-01)

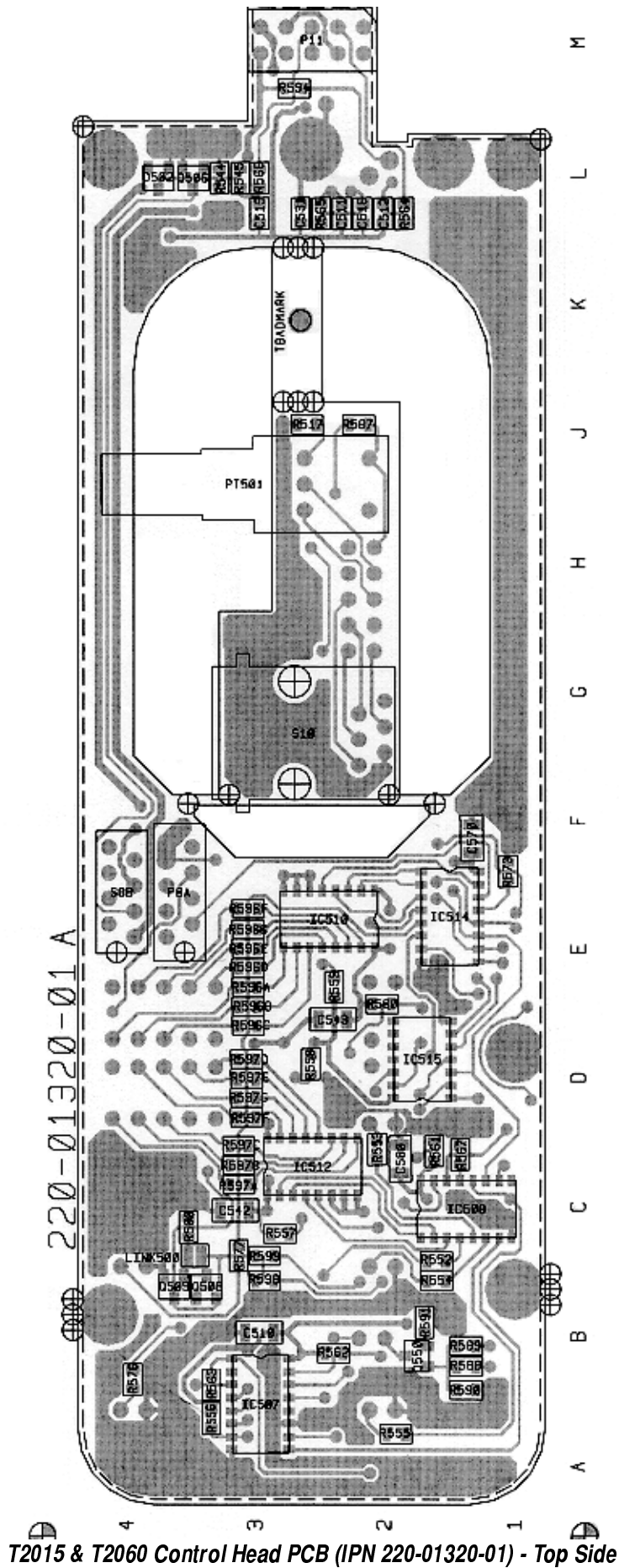
Ref	Var	IPN	Description	Ref	Var	IPN	Description
BUSY		008-00010-25	(S) LED 2MM GREEN TOWER 3.8MM BASE ROHM	R589		036-14470-00	RES M/F 0805 CHIP 4K7 5%
				R590		036-14220-00	RES M/F 0805 CHIP 2K2 5%
C510		015-06100-08	CAP CER 1206 CHIP 100N 10% X7R 50V	R591		036-13150-00	RES M/F 0805 CHIP 150E 5%
C511		015-25150-08	CAP CER 0805 CHIP 15N 10% X7R 50V	R594		036-12100-00	RES M/F 0805 CHIP 10E 5%
C512		015-24100-08	CAP CER 0805 CHIP 1N 10% X7R 50V	R596A		036-13680-00	RES M/F 0805 CHIP 680E 5%
C513		015-24100-08	CAP CER 0805 CHIP 1N 10% X7R 50V	R596B		036-13680-00	RES M/F 0805 CHIP 680E 5%
C516		015-24470-08	CAP CER 0805 CHIP 4N7 10% X7R 50V	R596C		036-13680-00	RES M/F 0805 CHIP 680E 5%
C517		015-25220-08	CAP CER 0805 CHIP 22N 10% X7R 50V	R596D		036-13680-00	RES M/F 0805 CHIP 680E 5%
C518		015-24100-08	CAP CER 0805 CHIP 1N 10% X7R 50V	R596E		036-13680-00	RES M/F 0805 CHIP 680E 5%
C519		015-25100-08	CAP CER 0805 CHIP 10N 10% X7R 50V	R596F		036-13680-00	RES M/F 0805 CHIP 680E 5%
C520		015-24330-08	CAP CER 0805 CHIP 3N3 10% X7R 50V	R596G		036-13680-00	RES M/F 0805 CHIP 680E 5%
C531		015-23150-01	CAP CER 0805 CHIP 150P 5% NPO 50V	R597A		036-13680-00	RES M/F 0805 CHIP 680E 5%
C542		015-06100-08	CAP CER 1206 CHIP 100N 10% X7R 50V	R597B		036-13680-00	RES M/F 0805 CHIP 680E 5%
C543		015-06100-08	CAP CER 1206 CHIP 100N 10% X7R 50V	R597C		036-13680-00	RES M/F 0805 CHIP 680E 5%
C570		015-06100-08	CAP CER 1206 CHIP 100N 10% X7R 50V	R597D		036-13680-00	RES M/F 0805 CHIP 680E 5%
C580		015-06100-08	CAP CER 1206 CHIP 100N 10% X7R 50V	R597E		036-13680-00	RES M/F 0805 CHIP 680E 5%
				R597F		036-13680-00	RES M/F 0805 CHIP 680E 5%
DSCAN		008-00010-25	(S) LED 2MM GREEN TOWER 3.8MM BASE ROHM	R597G		036-13680-00	RES M/F 0805 CHIP 680E 5%
DAUX		008-00010-25	(S) LED 2MM GREEN TOWER 3.8MM BASE ROHM	R598		036-14220-00	RES M/F 0805 CHIP 2K2 5%
DCALL		008-00010-25	(S) LED 2MM GREEN TOWER 3.8MM BASE ROHM	R599		036-14470-00	RES M/F 0805 CHIP 4K7 5%
DMON		008-00010-25	(S) LED 2MM GREEN TOWER 3.8MM BASE ROHM				
D502		001-10000-99	(S) DIODE SMD BAV99 DUAL SWTCH SNGL INL	S8B		240-04020-50	SKT 8WAY 2ROW(2X4) PCB MTG MICROMATCH
D520		008-00010-15	(S) LED 3MM GREEN HLMP1585 DIFSD 2V3 6.0	S10		240-04021-61	SKT TELEPHONE JACK 6-WAY SIDE ENTY 555163
D521		008-00010-15	(S) LED 3MM GREEN HLMP1585 DIFSD 2V3 6.0				
D522		008-00010-15	(S) LED 3MM GREEN HLMP1585 DIFSD 2V3 6.0	TX		008-00010-21	(S) LED 2MM RED TOWER 3.8MM BASE ROHM SL
				TENS		008-00020-29	(S) LED DISPLAY GREEN 7 SEG SINGLE HDSP-
IC507		002-10140-21	(S) IC MC14021BDR2 8BIT SHIFT REGSTR.SO				
IC508		002-74905-95	(S) IC SMD 74HC595 SHIFT REGISTER	UNITS		008-00020-29	(S) LED DISPLAY GREEN 7 SEG SINGLE HDSP
IC510		002-10045-43	(S) IC SMD 4543 BCD 7SEG DECODE/DRIVER				
IC512		002-10045-43	(S) IC SMD 4543 BCD 7SEG DECODE/DRIVER				
IC514		002-74905-95	(S) IC SMD 74HC595 SHIFT REGISTER				
IC515		002-74900-04	(S) IC SMD 74HC04D HEX INVERTER BUFFD				
P8A		240-00026-23	CONN PADLE BD 8WAY MICRO MATCH 0-215570-				
P11		240-00020-87	HEADER 2X5 WAY RGT ANGLE PCB MTG MOLEX				
PT501		040-05100-20	SWITCH ROT 10K LOG POT 3A 16VDC SPST PC				
Q506		000-10008-48	(S) XSTR SMD BCW60/BC848B215 NPN SOT23 A				
Q508		000-10008-57	(S) XSTR SMD BCW70 PNP SOT23 AF SML SIG				
Q509		000-10008-48	(S) XSTR SMD BCW60/BC848B215 NPN SOT23 A				
Q550		000-10008-48	(S) XSTR SMD BCW60/BC848B215 NPN SOT23 A				
R500		036-14100-00	RES M/F 0805 CHIP 1K 5%				
R517		036-10000-00	RES M/F 0805 CHIP ZERO OHM				
R544		036-15470-00	RES M/F 0805 CHIP 47K 5%				
R545		036-15470-00	RES M/F 0805 CHIP 47K 5%				
R552		036-13560-00	RES M/F 0805 CHIP 560E 5%				
R553		036-13560-00	RES M/F 0805 CHIP 560E 5%				
R554		036-13560-00	RES M/F 0805 CHIP 560E 5%				
R555		036-13560-00	RES M/F 0805 CHIP 560E 5%				
R556		036-15470-00	RES M/F 0805 CHIP 47K 5%				
R557		036-15470-00	RES M/F 0805 CHIP 47K 5%				
R558		036-15470-00	RES M/F 0805 CHIP 47K 5%				
R559		036-15470-00	RES M/F 0805 CHIP 47K 5%				
R560		036-15470-00	RES M/F 0805 CHIP 47K 5%				
R561		036-15470-00	RES M/F 0805 CHIP 47K 5%				
R562		036-15470-00	RES M/F 0805 CHIP 47K 5%				
R563		036-15470-00	RES M/F 0805 CHIP 47K 5%				
R564		036-13470-00	RES M/F 0805 CHIP 470E 5%				
R565		036-13470-00	RES M/F 0805 CHIP 470E 5%				
R566		036-13470-00	RES M/F 0805 CHIP 470E 5%				
R567		036-14100-00	RES M/F 0805 CHIP 1K 5%				
R573		036-14100-00	RES M/F 0805 CHIP 1K 5%				
R576		036-13560-00	RES M/F 0805 CHIP 560E 5%				
R577		036-13560-00	RES M/F 0805 CHIP 560E 5%				
R587		036-12100-00	RES M/F 0805 CHIP 10E 5%				
R588		036-14220-00	RES M/F 0805 CHIP 2K2 5%				

T2015 & T2060 Control Head Mechanical & Miscellaneous Parts

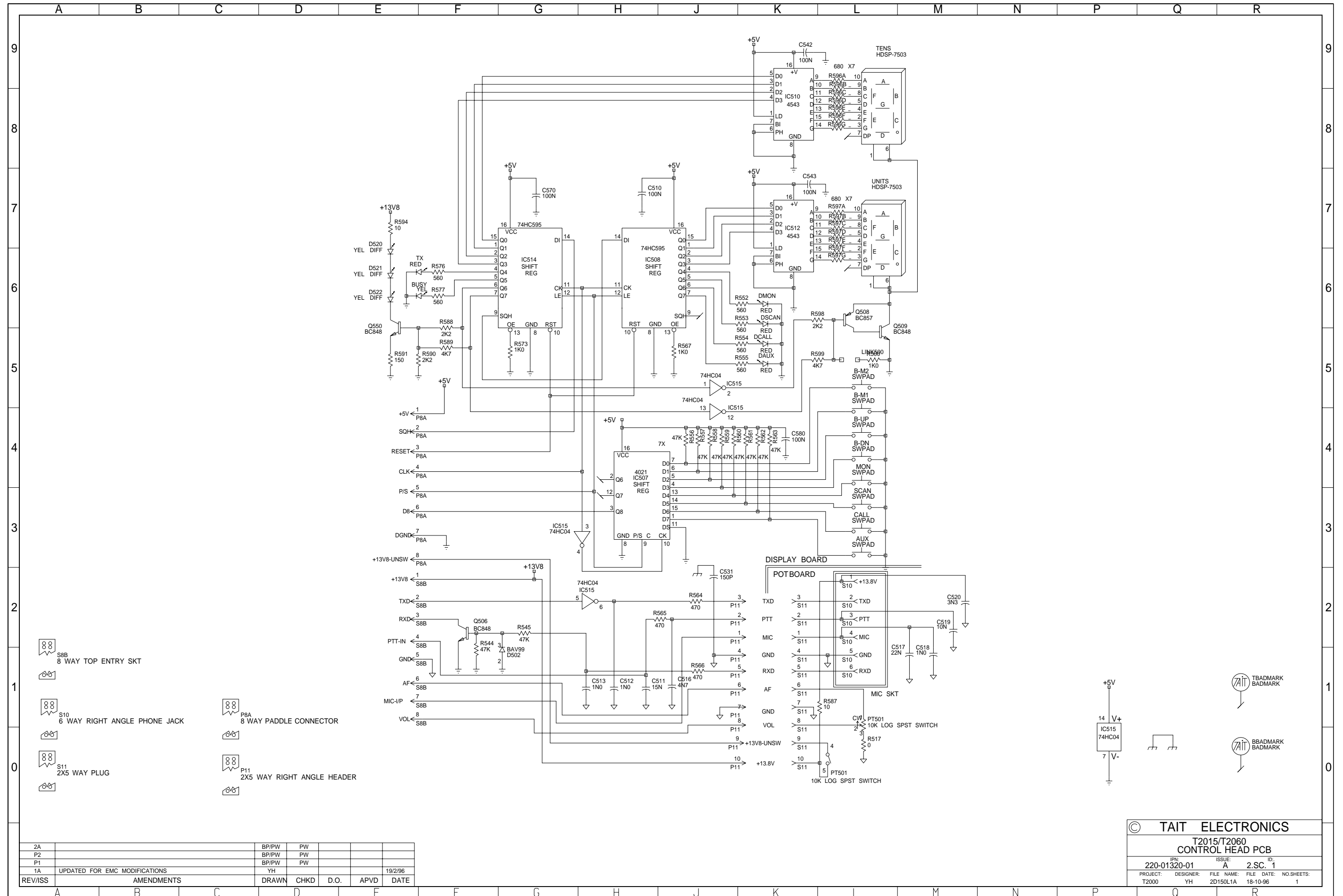
IPN	Description	IPN	Description
220-01320-01	PCB T2015 DISPLAY BRD		
240-00020-54	PLUG 16 WAY 2X8 FLAT CABLE TERMN MICROMATCH		
240-00020-56	PLUG 8WAY 2ROW(2X4) CORD MTG IDC MICROMATCH		
240-04020-72	SKT HOUSING 2 WAY CORD MTG ULTREX		
240-04020-99	SKT RECEPTACLE SML WIRE CRIMP FOR ULTREX HOUS		
250-00010-19	SPKR A3M2520 C/W RUBBER SEALING RING		
304-07035-00	LIGHT SPREADER A2M2531 BUTTONS T2000 FM1/TR1		
304-07037-00	LIGHT SPREADER A4M2533 KNOB T2000 FM1/TR1		
311-01042-01	KNOB A3M2530 T2000 S11		
312-01049-01	LENS T2015/60 SII GREEN MC DISPLAY		
316-06489-01	PNL FRT SCR N T2015 SII		
349-00010-22	SCREW NO 4X3/8 PAN POZI PLASTITE		
349-00010-24	SCREW #4X5/8 PLASTITE PAN POZI		
356-00010-01	TAG SOLDER 3MM SHORT M6132/3.2		
357-00010-03	FIX PUSH ON SFO 2938		
365-00100-20	LABEL WHITE S/A 28X11MM QUIKSTIK RW718/4		
400-00020-07	SLEEVING 2MM SIL RUBBER		
429-20000-05	T2000 SERIES II INSTALLATION GUIDE		
T2015 VARIANT PARTS			
201-00030-10	WIRE #1 T/C WIRE 7/0.2MM PVC BLACK		
205-00010-12	CABLE FLAT RBBN 16 CORE 16/7/0.1 GREY		
301-00001-05	ADAPTOR FRT PNL T2000 SII		
311-03075-01	KEYPAD T2015 SII INTERNATIONAL		
349-00020-30	SCREW TAPTITE M3X6MM PAN POZI BZ		
459-20100-02	T2010/T2015 SERIES II USERS GUIDE		
T2015 EMC VARIANT PARTS			
205-00010-16	CABLE FLAT RBBN 25 CORE 28 AWG GREY		
240-00010-91	CONN MALE ON WIRE 18WAY MICROMATCH		
301-00001-03	ADAPTOR FRT PNL T2000 SII		
311-03075-01	KEYPAD T2015 SII INTERNATIONAL		
459-20100-02	T2010/T2015 SERIES II USERS GUIDE		
X2EFO3	EMC FILTER PCB ASSEMBLY T201X T2030		
T2060 VARIANT PARTS			
201-00030-10	WIRE #1 T/C WIRE 7/0.2MM PVC BLACK		
205-00010-12	CABLE FLAT RBBN 16 CORE 16/7/0.1 GREY		
301-00001-03	ADAPTOR FRT PNL T2000 SII		
311-03089-01	KEYPAD T2060 SII LTR INTERNATIONAL		
459-20600-02	T2060 SERIES II USERS GUIDE		



T2015 & T2060 Control Head PCB (IPN 220-01320-01) - Bottom Side



T2015 & T2060 Control Head PCB (IPN 220-01320-01) - Top Side



© TAIT ELECTRONICS	
T2015/T2060 CONTROL HEAD PCB	
IPN: 220-01320-01	ISSUE: A
PROJECT: T2000	DESIGNER: YH
FILE NAME: 2D150L1A	FILE DATE: 18-10-96
NO. SHEETS: 1	ID: 2.S.C. 1

2A		BP/PW	PW			
P2		BP/PW	PW			
P1		BP/PW	PW			
1A	UPDATED FOR EMC MODIFICATIONS	YH			19/2/96	
REV/ISS	AMENDMENTS	DRAWN	CHKD	D.O.	APVD	DATE

